

VENÜS



UNDER-CONTENT REVERSE osmosis USER'S MANUAL



DECLARATION OF CONFORMITY
DECLARATION OF CONFORMITY

Aşağıda tanımlanan mamul/mamulleri Direktifi, 2014/35/EU Alçak Gerilim Direktifi ve 2014/30/EU elektromanyetik uyumluluk direktifi yönetmeliği
We declare that we produce in a way that meets the requirements.

Name of the product : REVERSE osmosis WATER TREATMENT SYSTEMS

Models : AQUABYR VERA LUX P160 WITH 6 STAGE PUMP, AQUABYR VERA P100 WITH 5 STAGE PUMP, CLASS WITH 5 STAGE PUMP WITH RAVENT CAB 2.2 TANK, CLASS WITH RAVENT CAB CLASS WITH 6 STAGE PUMP, 2.2 TANK WITH RAVENT CABIN, 2.2 TANK WITH 6 STAGE PUMPS, 2.2 TANK WITH RAVENT PUMPS 2.2 APPLICATION WITH RAVENT PUMPS TANK, JAMMY TIGER CLASS 2.2 TANK WITH 5 STAGE PUMP, JAMMY TIGER CLASS 6 STAGE PUMP 2.2 TANK, JAMMY TIGER LUX 5 STAGE PUMP 2.2 TANK, JAMMY TIGER LUXURY 6 STAGE PUMP 2.2 TANK, JAMMY TIGER LUXURIOUS STAGE PUMP, AANDYAMIRA LUX 6 STAGE PUMP, AANDDYNALIC 2.2 A TANK, TIGER LUXURY STAGE 2.2 WITH 5A PUMP, WITH RAVENT COOL CAB CLASS 5A WITH PUMP 3.2 TANK, WITH RAVENT COOL CAB CLASS 6A WITH PUMP 3.2, WITH RAVENT COOL CAB LUX 5A PUMP 3.2, WITH RAVENT COOL CAB LUX 6A PUMPALİ 3.2, with RAVENT COOL CABIN, İMPALİ K STAGE, 5 STAGE WITH İCONIC ELEGAND PUMP, 6 STAGE WITH İCONIC ELEGAND PUMP, 5 STAGE WITH İCONIC PLUS PUMP, 6 STAGE WITH İCONIC PLUS PUMP, 5 STAGE WITH İCONIC ELEGAND PUMP, İCONIC ELEGAND PUMP 6 STAGE ENJOY MPALİ 5 PHASE, PALLAS ENJOY SMART PUMP 6 PHASE, PALLAS ENJOY COOL 5 PHASE, PALLAS ENJOY COOL 6 PHASE, PALLAS ENJOY SLİM

Uygulanabilir AB Direktifleri (2014/35/AB) Alçak gerilim direktifi - 2014/30/AB elektromanyetik uyum direktifi.

Applicable International Technical Standards:

TS EN 60730-2-15: 2011, TS EN 55014-1:2017, 55014-2:2016 TS EN 61000-3-2:2014, TS EN 61000-3-3:2014, TS EN 60335-1:2012+AC 2014 + A11: 204

VENUS WATER TREATMENT SYSTEMS

ADDRESS: Baylar Mahallesi 72234 Sokak No:1/8
Cumra / KONYA

NOT: Cihaz/ Ekipman üzerinde firmamız izni olmadan yapılacak tadilatlardan dolayı beyanımız geçerliliğini yitirir.

OUR VALUED CUSTOMER,

Water Treatment Systems uses the Reverse Osmosis system, which is one of the world's advanced water treatment technologies.

Water Treatment Systems It is designed to produce drinking water quality water by purifying the physical, chemical and microbiological pollutions that may be in your water.

Water Treatment Systems not only produces drinking water, but also produces good quality water at the stage of meeting domestic consumption needs. It will allow you to get the real taste of your food and drinks.

With Water Treatment Systems, we offer water, which is the most important element of a healthy life, to your use safely.

This product has been produced in environmentally friendly modern facilities without harming the environment. We recommend that you carefully read this entire user manual before you start using the product and keep it as a reference tool, so that our product, which has undergone rigorous quality control, is produced in modern facilities.

“Thank you for choosing our product.”

İÇİNDEKİLER

GENERAL INFORMATION	4
OPERATING PRINCIPLE	5
POINTS TO BE CONSIDERED BEFORE INSTALLATION OF THE DEVICE.....	6
BOX CONTENTS AND ASSEMBLY PARTS	7
DEVELOPMENTAL SPECIFICATIONS.....	8
DEVICE INSTALLATION AND INSTALLATION PHASE	9
MAINTENANCE, REPAIR AND CLEANING OF THE APPLIANCE	11
OPERATING THE APPLIANCE AFTER MAINTENANCE	14
WARRANTY CONDITIONS	15
IMPORTANT SAFETY AND ENVIRONMENTAL INSTRUCTIONS & CONSUMER RIGHTS.....	16
TROUBLESHOOTING	17
FREQUENTLY ASKED QUESTIONS	18
AUTHORIZED SERVICE STATIONS AND SPARE PARTS SUPPLY POINTS	18

GENERAL INFORMATION

What is reverse osmosis?

Osmosis is the passage of water from a less dense medium to a more dense medium separated by a semipermeable membrane. In the naturally occurring osmosis event, reverse osmosis (reverse osmosis) event is realized by applying pressure to a very dense environment. By applying pressure to a very dense medium, water passes from a very dense medium to a less dense medium.

The semi-permeable membrane used in the Reverse Osmosis system has a pore diameter of 8-12 angstroms.

Water molecules are smaller than 8-12 angstroms and have a neutral electrical charge. In this way, they easily pass through the membranes.

However, since the positively and negatively charged ions and molecules, bacteria and viruses in the water are larger than 12 angstroms, they cannot pass through the membranes and head straight for the waste line. In summary; It is the most ideal water

treatment method available for ion removal with advanced filtration.

Reverse osmosis technique is one of the rapidly advancing technologies today.

The design of the reverse osmosis system requires a lot of technical knowledge and experience, such as the desired product water quality, raw water analysis, and the type of membrane to be used.

Reverse osmosis (reverse osmosis) applications

The water purifier is designed to operate with minimum water pressure. It does not require the use of chemicals and provides quality water production. It is manufactured in a way that it can be easily mounted wherever you want with its minimum dimensions.

The reverse osmosis purification device ensures that the taste and quality of your water is increased. It reduces odor and sediment as well as chlorine up to 99%. The reverse osmosis device also reduces contaminants that may be present in the water, such as lead, copper, barium, chromium, mercury, sodium, cadmium, fluoride, nitrite, nitrate and selenium.

As long as the water purifiers are used in accordance with the technical specifications described in this booklet, before assembly and in accordance with the assembly instructions, they will serve economically and efficiently for many years.

This device should only be used in accordance with the design purpose and technical specifications stated in the brochure and user manual. In maintenance and repairs, interventions should be made in accordance with the instructions given in this user manual, and original parts provided by the authorized service should be used.

USED IN THIS BOOKLET MEANING OF SYMBOLS



Important information and advice on using the device



fire hazard warning



Electric shock warning



Warnings about dangerous situations related to life and property safety



Warning about hot surfaces

PACKAGING INFORMATION OF THE PRODUCT



The packaging of the product is produced from recyclable materials in accordance with our national legislation.



Packaging waste should not be disposed of with household or other wastes, dispose of it at packaging waste collection points.

GENEL BİLGİLER

ION REMOVAL IN REVERSE osmosis

ION AND ORG. PESTICIDE	REMOVAL (%)	ION AND ORG. PESTICIDE	REMOVAL (%)
Aluminum	97-98	Nickel	97-99
Ammonium	85-95	Nitrate	93-96
Arsenic	94-96	Phosphate	99+
Magnesium	96-98	Potassium	92
Bicarbonate	95-96	radioactivity	95-98
bromide	93-96	Radium	97
Cadmium	96-98	Selenium	97
Calcium	96-98	silica	85-90
chloride	94-95	Silver	95-97
Chromate	90-98	Sodium	92-98
Chromium	96-98	Sulfate	99+
Copper	97-99	Zinc	98-99
Cyanide	90-95	Boron	50-70
Fluoride	94-96	borate	30-50
Iron	98-99	Mercury	96-98
Bullet	96-98	bacteria	99+
manganese	96-98	Virus	99+

WORKING PRINCIPLE

UNDER-CONTAINER TERZ osmosis

PRODUCTION OF CLEAN WATER IN THE SYSTEM

STEPS

A minimum 3 bar mains pressure is required for the Reverse Osmosis System to work. In areas where the mains pressure is insufficient, pump reinforcement is made. The water coming from the mains passes through the following filtrations in order.

1st Stage: 5 micron pp sediment filter is a pre-torlu filter and it protects the following filtrations and especially the membrane filter by keeping the floating matter and particles in the water. (1 mm = 1000 microns)

Stage 2: Activated carbon filter, the organ in the water

It removes pollution from water, which is harmful to human health and membrane filter, by keeping chemical substances, chlorine and chlorine compounds, which are carcinogenic in large amounts.

Stage 3: The block carbon filter is subjected to more sensitive particle filtration to retain the floating materials in the water.

Stage 4: Membrane filter In the semi-permeable membrane with 8-12 Angstrom pores, bacteria, viruses, heavy metals in the water are kept at a rate of 95-98%, and they are sent to the drainage from the waste water part of the membrane and thrown out.

Step 5: The last carbon filter (post carbon) water is passed through the carbon filter for the last time, and clear and extremely reliable drinking water comes to our clean water tap on the sink.

POINTS TO BE CONSIDERED BEFORE INSTALLATION OF THE DEVICE

The working water temperature of the water purifiers is between a minimum of 5°C and a maximum of 40°C.

There is a risk of freezing in operations below 5°C, and there is a risk of damage to the filters above 40°C.

First of all, it is necessary to choose a suitable place for the installation of water treatment devices. While choosing the location, the proximity of the RO device to the cold water line and the drainage should be considered, and sufficient space should be left for operation during filter changes and intervention in case of failure.

Water purifier inlet conductivity max. It is designed for city mains waters with 600 ppm and turbidity of maximum 3 NTU, and waters with characteristics close to mains water characteristics. If the raw water source and character of the system is not known exactly, the raw water should be analyzed and its compatibility with the system should be checked.

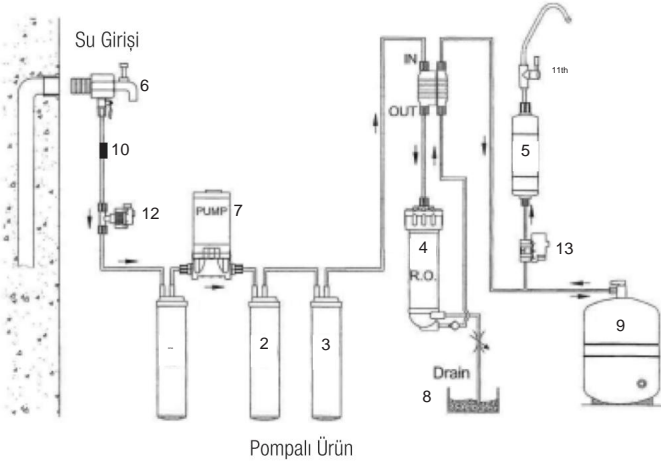
When used outside the limit values specified in the technical specifications section of the user manual, product water of the desired quality will not be obtained. Using such feed water will cause variability in filter and membrane change periods.

The inlet pressure of the water purifier is between 3 – 6 bar in non-pump water purifiers, and 1 – 6 bar in pumped water purifiers. The optimum working pressure is 3 bar. If the inlet pressure is above 4 bar, a pressure reducer must be installed at the inlet, as it will cause more waste water to be discharged.

Do not plug the device into the socket before it is installed.

Our company will not be responsible for the problems caused by not following the warnings mentioned above.

TREATMENT DEVICE FLOW CHART



1. Pre-Filter 2.

First Carbon 3.

Sediment Filter / CTO 4. RO

(50-100 GPD)

5. Final Carbon

6. Raw Water

7. Pump

8. Waste Water

9. Storage Tank 10.

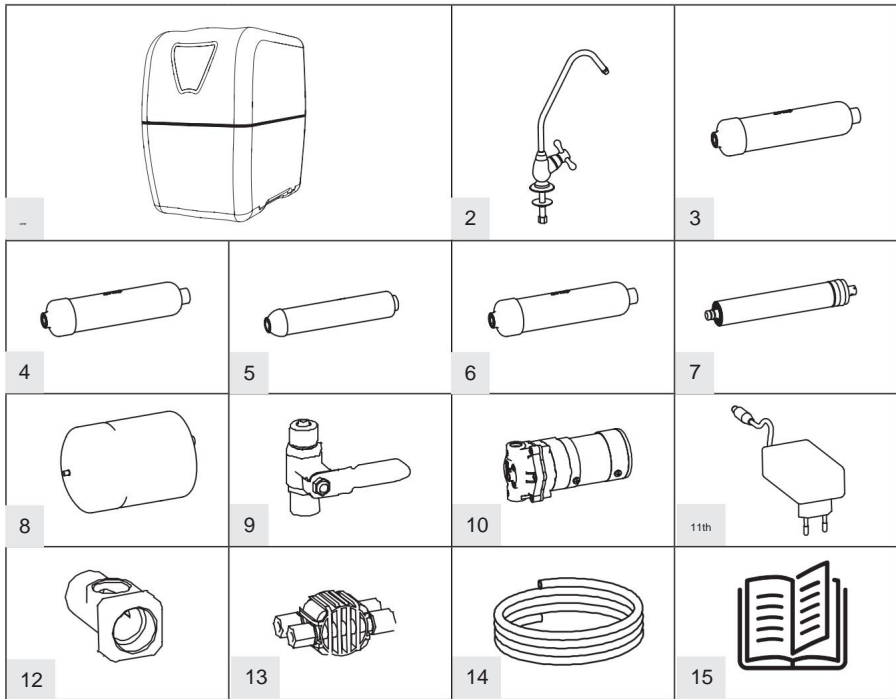
Pressure Reducer

11. Faucet

12. Low Pressure Switch

13. High Pressure Switch

BOX CONTENTS AND PRODUCT PARTS



001. Reverse Osmosis Device

2. Faucet

3. Inline Block Carbon Cartridge Filter (CTO)

4. Gac Carbon Cartridge Filter (UDF)

5. Inline Coconut Post Carbon Filter

6. Inline 5 Micron Spun (Sediment) Filter

7. Membrane

8. Metal Pressure Balance Tank

9. Metal Ball Valve 1/4"

10. 75 GPD Dynamic Pump

(Available in pump version)

11. 24 Volt 1.5 Amp Adapter

(Available in models with pump)

12. Feed Water Connector

13. Automatic Shut-off Valve

14. Hose

15. User Manual and Warranty Certificate



HAND TOOLS REQUIRED FOR INSTALLATION (It should be kept out of the box.)

* Set of drill, steel or diamond drill bits 12 and 13 mm bit and herringbone file (rasp). You need to use it according to the place and floor where you will install it.

* Teflon tape.

* Wrench (toad wrench or required open mouth wrench set).

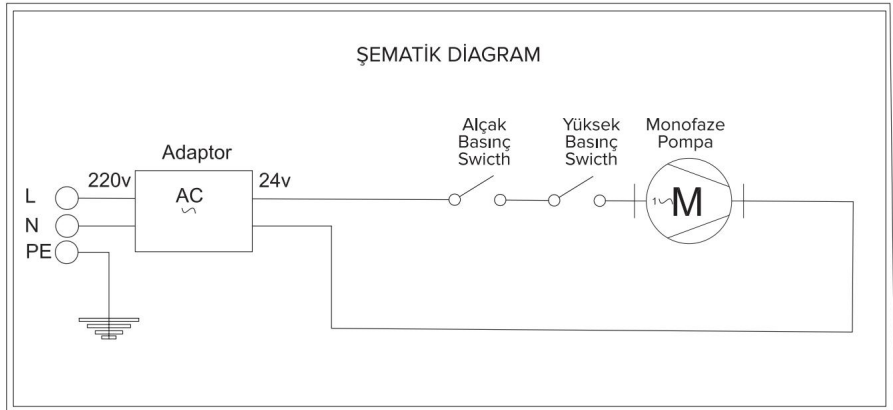
* A sharp knife or fork.

DEVICE FEATURES

TECHNICAL SPECIFICATIONS

	PUMPED	WITHOUT PUMP
min. Operating Water Temperature	5 °C	5 °C
Max. Operating Water Temperature	40 °C	40 °C
min. Inlet Pressure	100,000 pascals	300,000 pascals
Max. Inlet Pressure	600,000 pascals	600,000 pascals
Max. Input TDS (ppm)	500ppm	500ppm
Inlet Diameter	6mm	6mm

ELECTRICAL FLOW DIAGRAM FOR PUMPED DEVICES



NOTE: The equipment used in this product complies with Water Quality, CE and NSF standards. Equipment includes these documents.

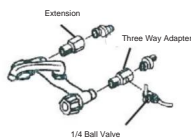


NOTE: Products that do not use a pressure reducer are out of warranty.

DEVICE INSTALLATION AND INSTALLATION PHASE

THINGS TO DO DURING THE INSTALLATION STAGE

WATER TAKING FROM SINGLE BATTERY



WATER TAKING FROM DOUBLE BATTERY

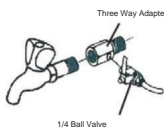
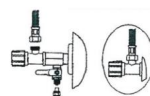


FIGURE A-2

WATER TAKING UNDER THE BENCH



1. Before the installation phase, the mains valve of the water coming to the device or Close the valve on the incoming line.
2. After draining the remaining water in the pipes, mount the supply water connection adapter (3-way adapter) to the mains by wrapping it with Teflon tape in a leakproof manner. (Figure A- 2)
3. Mount the 1/4" metal ball valve to the feed water connection adapter (3-way adapter) by wrapping Teflon tape so that it can be opened and closed easily. (Figure A – 3)
4. Attach 6 mm water inlet hose to 1/4" Metal ball valve. Spherical Make sure the valve is closed.
5. After these steps, open the mains valve or the line supply valve and check whether there is any leakage.
6. If the counter or sink sink is punctured, the clean water tap must be installed carefully in terms of usage and aesthetics. After taking measurements in a way that you can mount the washer, nut and union at the bottom of the counter or sink, you can proceed to the drilling process. Otherwise, it may cause you to drill the wrong hole.
7. If the place to be drilled is marble, granite ceramic, laminate or sheet metal sink, you must first drill with a 5 mm drill bit and then with a 12 mm bit. The drill should be operated at low speed and without impact.
If the countertop is cast concrete covered with tiles, it should be drilled with a hammered diamond bit. (Figure A- 4)
8. The outer length of our faucet is 7 cm. If the counter is thicker than 7 cm, you need to add additional parts to the faucet as needed. Then you should fit the faucet into the hole, adjust the gaskets and tighten the salmon tightly.
9. The filters must be washed before use and the residues on them must be discarded. (See the Washing Procedures page.)

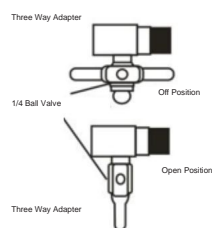


FIGURE A-3

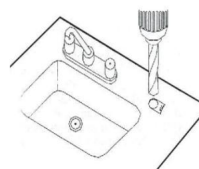


FIGURE A-4



FIGURE A-5

i The images in the guide may not be exactly the same.

i NOTE: If you do not want the undercounter sink and sink to be pierced, it can be installed using a single tap. For the replacement of the battery you have used, please apply to our authorized service for the triple tap through which hot, cold and treatment water flow. (There is an extra charge for the faucet.)

CİHAZIN KURULUMU VE MONTAJ AŞAMASI

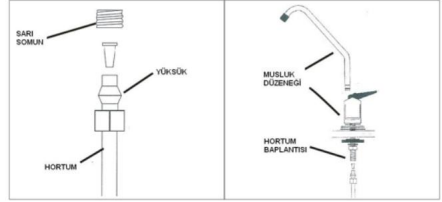
PLACING THE FILTERS

- 12" Inline 5 Micron Spun (Sediment) Filter
- 12" Inline Gac Carbon Cartridge Filter (UDF)
- 12" Inline Block Carbon Cartridge Filter (CTO)
- 75 GPD Membrane
- 10" Inline Coconut Post Carbon Filter

• After the filters are placed, open the membrane housing cover. Insert the membrane all the way into the sheath that came out of the box: then close the cover.

• After connecting the faucet assembly and the waste water line, adjust the hose length so that it is sufficient between the post carbon filter outlet and the faucet. • Remove the post carbon filter outlet and attach it to the hose and tighten firmly by pushing it.

Put the yellow nut and ferrule into the hose in order, under the clean water tap, on the other end of the hose. Finally, push the hose to the tap and tighten the nut well.



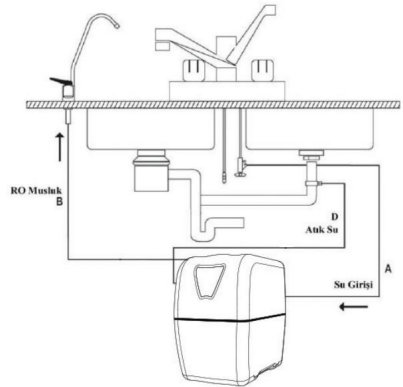
HOSE CONNECTION DIAGRAM

As seen in the figure; A: Device

water inlet B: Hose clean water

outlet connects to RO faucet C: Hose should be connected to clean water line from device post carbon outlet.

D: The hose must be connected to the waste water line drain from the device waste water line drains.



CİHAZIN KURULUMU VE MONTAJ AŞAMASI

OPERATING THE DEVICE AFTER INSTALLATION

After assembling and placing all the parts, first open the water mains line to check for leaks. Then turn on the water slowly. At first, the water from the faucet will start to flow like a leak. 10 minutes after the water starts to flow in this way. albino. If your water does not leak and flows drop by drop during this process, it means that it cannot do the treatment with 100% efficiency, probably because your water pressure is low. If you are experiencing such a problem, see the problem and solutions section.

Now your device is active and working, you can drink it safely.



!! IMPORTANT !!

* During the first few days after installation, air bubbles may appear in your water.

* The water purifier will get better efficiency and work longer in more active use. Therefore, you can easily use your water for cooking water, tea, coffee, etc. We recommend that you use it.

* Water leakage, broken filters etc. In such cases, turn off the valve in the feed water and cut the incoming line and fix the problem.

MAINTENANCE, REPAIR AND CLEANING OF THE DEVICE

CHANGE TIMES OF FILTERS

Spun (Sediment) Filter:

Although it varies depending on water pollution, the average replacement time is 6 months.

Inline GAC Carbon Cartridge Filter (UDF): If

your water is clear and the amount of chlorine is low, its average life is 6 months.

Inline Block Carbon Cartridge Filter (CTO):

The average life is 6 months, depending on the chlorine content of the water and the change period of the pre-filters.

Membrane Filter:

The average life of the filters is 3 years depending on their healthy operation and regular maintenance.

Inline Coconut Post Carbon Filter:

Average Average life is 12 months.

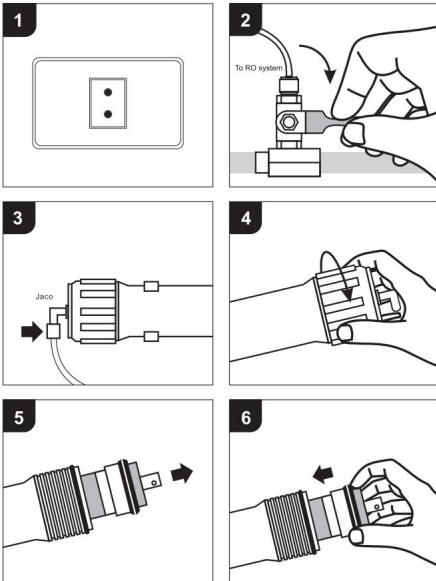
If the supply cord is damaged, it must be replaced with a specially prepared cord or cord set from the manufacturer or service agent.

CİHAZIN BAKIM ONARIM VE TEMİZLİĞİ

MEMBRANE REPLACEMENT

1. Pull the plug out of the socket.
2. Close the water supply valve.
3. Connect Jaco Fittings counterclockwise. turn it.
4. Open the membrane housing cover by turning it counterclockwise.
5. Pull the membrane out with a clamp.
6. Carefully insert the membrane until it is fully seated in the sheath.

After installing the membrane, replace the cover and hose in the same way, open the ro tap for cleaning the newly installed membrane filter, run the system for 2 hours and drain the water, then you can drink the purified water.



This appliance can be used by children aged eight and over and persons with reduced physical, emotional or mental capabilities, or lack of experience and knowledge, if they have been given supervision or instruction concerning use of the appliance in a safe way and understand the hazards involved. Children should not play with the device. Cleaning and user maintenance should not be made by children without supervision.

WASHING PROCEDURES

In order for the product you have purchased to work properly, you are kindly requested to follow the washing procedure written below.

1. The Tank Valve should be closed and the purified water tap should be opened. The plug must be inserted into the socket and the Ball valve (page 4, item 9) open. The place where the waste line will go should be a drain line and there should not be a place where it will form an open accumulation. (It will be convenient to connect it to the kitchen counter's drain).

2. Sediment Filter and Activated Carbon Filter (1st and 2nd Filter) are washed together. The black water that comes out must be discharged before it is given to the Block Carbon Filter (3rd filter). After obtaining clear water, Block Carbon (3rd Filter) is washed with the water passing through the 1st and 2nd Filters and the black water coming out of the block carbon should be discharged out (4th and 5th, if any, this water should not be given to the 6th filter) Block Carbon(3. filter) the filter is washed for 10 minutes. 3. The Post Carbon

(5th Filter) is washed with the clean water coming out of the first 3 filters - without installing the Membrane Filter (4th Filter) and the water should be drained out. After taking a clear water, if there is a Mineral or Ph filter (6.

The filter) is washed and this process continues until a clear water is obtained. 4. The membrane filter (4. Filter) is placed

in the membrane housing housing so that it remains at the bottom of the gaskets (these gaskets must be placed in the slot by getting wet and turning them to the right) and the housing cover is closed. Water is supplied to the membrane.

The first water that enters the membrane should be thrown out before it enters the tank and post carbon or, if any, mineral filter. The water should be drained directly out until 8 liters of water is taken from the membrane (this will take 45 minutes).

5. The tank valve should be opened and the clean water tap should be closed. Purified clean water must be filled into the tank, this process will take 45 minutes. At the end of 45 minutes, the tank must be filled at least once, and the clean water tap must be opened and emptied out.
6. At the end of these processes, you will drink safe and clean water.



!! ATTENTION !!

The first water supplied to the product must be discharged through the filters. It should never come into contact with the tank and the post carbon.



Do not forget to connect the plug to the electricity in pump models.

CİHAZIN BAKIM ONARIM VE TEMİZLİĞİ

As seen in the figures, the stages of membrane change are;

Turn on the clean water tap.

Loosen the union in the water inlet section of the membrane chamber and disconnect it from the connection.

Open the cover of the membrane chamber (with the help of a crow nose) and remove the membrane by turning it back and forth.

Clean the membrane chamber with a disinfectant (chlorinated water) and rinse the chamber.

Wet it or wipe it with a damp cloth so that the O-ring (gasket) at the bottom of the new membrane filter can be placed more easily. Push the membrane into the chamber by turning it to the right and left and seat it in the same way. Check the O-ring (gasket) inside the membrane and make sure it is in place.

Close the membrane chamber cover and tighten the cover tightly with your hand or the wrench provided.

Finally, fit the connection piece in the membrane filter water inlet and tighten it thoroughly.

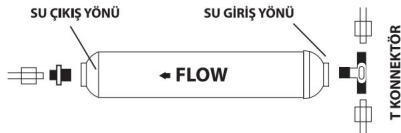
REPLACEMENT OF POST CARBON FILTER

Turn off the inlet water coming to the device and turn the clean water tap to the open position.

Take the filter out by loosening the hose connection fittings at the post carbon filter water inlet and outlet.

Remove the attached apparatus in the water outlet direction of the filter from its place and wrap enough Teflon on the tip of the T connector in the water inlet direction to ensure impermeability and place the new filter in the device.

Tighten the hose union connections.



WARNING: The FLOW text written on the filter while performing this operation is the water outlet direction. Be careful not to install it backwards and do not overtighten the tightened T connector and the union tip at the other end.

i Hot water should never be supplied to the treatment device. Otherwise All filters are damaged and the device is out of warranty.

i NOTE: Products that do not use a pressure reducer are out of warranty.

Water Purifier is a product designed for easy installation and maintenance. The important thing is not to exceed the periodic change times of the filters and to use the device cleanly. If the necessary maintenance and repair is not done, the life of your device will be shortened and the efficiency of your membranes will decrease. Such situations may cause your warranty to expire.

CLEANING THE DEVICE

Your water purifier should be disinfected at least once a year as follows;

Turn off the supply water to the device.

Open the tap of your purification device and empty the storage tank (applies to models with a tank)

Add a teaspoon of chlorine to the filter housing and reinstall.

Turn on the feed water Fill

and empty the storage tank twice and replace all filter cartridges. (applies to models with tanks)

OPERATING THE DEVICE AFTER MAINTENANCE

FOLLOW FOR SIMPLE REPAIR OF THE DEVICE REQUIRED MATTERS

In order for your device to fully perform its functions and to have a long life, the following points must be observed. Otherwise, it will be out of warranty.

Do not use in waters with a water temperature above 40 °C.

Place or fix the device on a flat surface.

Do not play with the valves on the device, except when necessary.

In places where the installation pressure is high, a pressure reducing valve should be installed on the inlet line of the RO device.

Make sure that the periodic maintenance is done on time and by the authorized service.

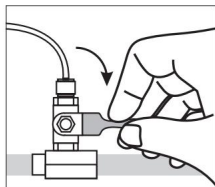
If the device is not used for a long time

Turn off the supply valve to the device. When it is to be operated, perform the initial commissioning steps.

Keep your device clean by periodically wiping it with a damp cloth and avoid harsh abrasive cleaning materials.

After opening our valves, you can open the water line coming to our device. Then open our RO faucet and check if there is any leakage.

Now you can use your water easily and safely.



Open the mini valve going to the RO system as shown in the figure on the side.

CAUTION DURING HANDLING AND SHIPPING MATTERS TO BE TAKEN

First of all, apply the occupational safety rules.

Empty the water inside the storage tank during transportation or transportation.

Turn off the water line to the storage tank and carefully pull out the power plug if your device has a pump.

Carefully remove the purification device from its location.

Do not leave your device suspended in a high place.

In order not to lose the parts of your device, be careful to keep them in the same place without separating them.

Store the device in a dry and closed place. Take care not to drop the product, shake it, or be damaged by impact, heat, humidity and dust during a change of location. Do not expose to the sun.

You can get support from our authorized services to avoid unexpected damage during transportation and shipping.

Warranty and Spare Parts Supply Period: The warranty period of your product is 2 (two) years from the invoice date. You can obtain the spare parts of this product from our company for a period of 10 (ten) years from the date of delivery. The warranty is valid only for malfunctions that may occur in the device, and no rights or compensation can be claimed under any other name.

WARRANTY CONDITIONS

CUSTOMER'S ATTENTION REGARDING WARRANTY MATTERS TO MAKE

The consumer should pay attention to the following issues, as it does not cover the elimination of malfunctions caused by the use of the water purifier for other than its intended purpose.

Damages and malfunctions caused by usage errors Damages and malfunctions that occur during loading, unloading and transportation after the product is delivered to the customer

Low or excess voltage, damage and malfunctions caused by reasons that may occur in the electrical installation. It is consumable. The warranty period of the product is 2 (two) years against manufacturing defects.

Exceeding the maximum time required for repair

Damages and malfunctions caused by the above-mentioned issues are not covered by the warranty, and service can be provided for a fee. The responsibility of giving the guarantee certificate to the consumer is the responsibility of the seller, dealer, agency or representative office from which the consumer buys the goods.

If the warranty certificate is tampered with or falsified, the warranty certificate in your possession is void.

DAMAGES AND DEFECTS CAUSED BY USE ERRORS

Loss of original parts of the device or disassembly in violation of the instructions.

Physical bumps, scratches, breaks, etc. damage and malfunctions arising from the factors.

Damages and malfunctions caused by transportation and storage conditions.

Damages and malfunctions caused by changing or damaging electrical wiring connections.

Damages and malfunctions caused by painting or staining any part of the product. Damages and malfunctions caused by sticking labels that cannot be removed to the product.

Damages and malfunctions caused by natural disasters. Damages and malfunctions caused by operating the device with water below 5 degrees and water above 40 degrees.

Damages and malfunctions caused by electrical networks.

Damages and malfunctions caused by the replacement of parts or materials in the device other than the authorized service.


Damages and malfunctions caused by the introduction of foreign matter into the product.


Damages and malfunctions caused by wrong location selection, placement, wrong capacity selection, wrong installation pipe connections and misuse.

Damages and malfunctions caused by the use of non-original spare parts and accessories. Damages and malfunctions caused by operating the product without water or with insufficient water.

Damages and malfunctions caused by the user not performing the periodic maintenance and controls.

Damages and malfunctions caused by clogging of the wastewater drainage line and continuing to operate the device in this way.

 Defects that are out of the scope of warranty are repaired by our authorized services for a fee.

 The warranty certificate that does not have the stamp and signature of the seller company and the date of sale, brand and model is invalid. The original or photocopy of the invoice should be kept together with this document and submitted when necessary, otherwise the date of manufacture on the device will be taken as the basis for the start of the warranty. The customer cannot claim any rights or compensation other than these commitments.

IMPORTANT SAFETY AND ENVIRONMENTAL INSTRUCTIONS & CONSUMER RIGHTS

HUMAN AND ENVIRONMENT DURING USE DANGEROUS OR HARMFUL TO HEALTH

INFORMATION ABOUT SITUATIONS THAT MAY OCCUR

Please note that the floor where electrical connected devices are located is dry insulator.

There is no important issue that will pose a threat to the environment and human health during use.

When your device is at the end of its useful life, send it for recycling.

LIFETIME OF THE DEVICE IF

the periodical maintenance is carried out and operated as specified in the user manual, the service life of the product is 10 (ten) years. Otherwise, this period may be shortened. As long as it is not exposed to high heat and sun, you can use the device efficiently for many years.

IN TERMS OF ENERGY CONSUMPTION OF YOUR DEVICE INFORMATION ON EFFICIENT USE

If you do not use the Pumped Water Purifier for more than 3 days, turn the product off and unplug it.

Be careful not to leave the faucet open.

In cases of low or excess voltage, pull out the power plug from the socket in order not to damage your device and to avoid excess electricity consumption.

Avoid consuming your water unnecessarily.

Do not place your water dispenser in direct sunlight or near appliances that emit heat.

COMPLAINTS AND OBJECTIONS OF CONSUMERS APPLICATIONS ON

In case the warranty document is not given by the seller, the consumer can apply to the general directorate of consumer protection and market surveillance of the ministry of customs and trade.

The consumer may apply to the consumer arbitration board or the consumer court in the place of residence or the consumer transaction, in case of disputes that may arise regarding the exercise of his rights arising from the warranty.

OPTIONAL RIGHTS PROVIDED TO THE CONSUMER

IN ARTICLE 11 OF THE LAW 1. In case the goods are found to be defective; Returning from the contract by declaring that it is ready to return the sold item, Demanding a discount

on the selling price at the rate of defects, Requesting a free repair of the sold item at the seller's expense, if it does not require an excessive cost, Requesting the item to be replaced with a non-defective one, if possible. one can use.

The seller is obliged to fulfill this demand preferred by the consumer.

2. The consumer's right to repair free of charge or to replace the product with a non-defective one can also be used against the manufacturer or importer. The seller, the manufacturer and the importer are jointly and severally liable for the fulfillment of the rights in this paragraph.

3. In case the consumer uses the right of free repair, If it fails again during the warranty period, If the maximum time required for repair is exceeded, In cases where it is determined by a report by the authorized service station, the seller, the manufacturer or the importer that the repair is not possible,

The consumer may request from the seller to return the price of the goods, to reduce the price at the rate of the defect or, if possible, to replace the goods with a non-defective one. In such cases, the seller cannot refuse the consumer's request. If this request is not fulfilled, the seller, the manufacturer and the importer are jointly and severally liable.

Energy saving is a new environmentally friendly energy source.

FAULT DETECTION

Problem	Reason	Troubleshooting
THE DEVICE DOES NOT WORK	No water inlet	Check if water has entered
	No power to the device	Check electrical connection
	Adapter burned out	Replace or call for service
	The low pressure switch is faulty	Replace or call for service
WHAT IS PRODUCTION IN THE DEVICE THERE IS NO WASTE (PURIFIED WATER AND NO WASTE WATER FLOW)	The supply water connection is closed	Open the feed water valve
	Filters are clogged	Replace clogged filters with new ones
We recommend that you also replace your waste throttle		
WASTEWATER FLOW IN THE DEVICE THERE IS BUT NO PRODUCTION OR PRODUCES VERY LITTLE	Membrane filter clogged	Wait for the hot water to heat up enough
	Check valve failed	Replace check valve.
	The tank may have burst	Replace the tank with a new one
TANK IS FULL WATER FROM WASTE COMING	Pressure too low or high	A low pressure pump device should be used. If it is at high pressure, a pressure reducer should be used.
	Check valve failed	Replace check valve.
ON THE DEVICE THERE IS WATER LEAK	Equipment not properly connected	Check all links
	Hose ends are crooked cut	Remove the leaking hose again, cut the end straight and replace it.
	Gaskets not seated	Put the gaskets in place
THE TASTE OF TREATED WATER COMING BROKEN (BITTLE TASTE AND ODOR PROBLEM)	It may be time to change the filter of the device.	Check the last filter change date. Change the filters after 6 months.
	The pH level in the device may be low	The pH level should be in the range of 7-8. If it is below this value, ask the service to install a pH filter. (Not under warranty, varies according to water)
	There may be bacteria on the device	Disinfect your device
WASTE WATER FROM THE DEVICE NOT COMING	Waste throttle clogged	Replace the waste throttle
	Filter maintenance date has passed	Change the filters, especially the membrane filter
FROM DEVICE TAP WATER IS COMING REDUCING	The tank may have burst	Install a new tank

FREQUENTLY ASKED QUESTIONS

"How often should Water Purifier Filters be changed?" It varies according to the condition and quality of your mains water and your frequency of use of the system. In any case, it is recommended to replace your filters every six months. We recommend that you keep the Post Carbon filter once a year and your original membrane no longer than three years.

"I just replaced the cartridges and my water is cloudy, is this normal?"

After installing your new filters, you will need to run your water for a few minutes. Since the carbon filters are made of natural materials, turbid black water may come out for a while (10-15 minutes), keep your tap open and close the tank valve, wait for the water to flow from the tap until your water becomes clear.

"I don't use a lot of water, so does the filter life change?" The change dates do not differ in the first three filters; While the water is being filtered, living organisms (microbes, bacteria) take up place in the filter, so the change begins as soon as the contact with the water is made. Less water use only affects the replacement time of the membrane filter.

"Can I do the product assembly and filter change myself?"

Yes, you can assemble the product and change the filters. However, any intervention made out of service will void the warranty of the device. Your device will be guaranteed and safe to be used in the service operations to be performed by an experienced water treatment service.

AUTHORIZED SERVICE STATIONS AND SPARE PARTS SUPPLY POINTS

i **First of all, apply to the dealers, dealers, agencies or representative offices you purchased about your water treatment devices.**

The warranty period of your device is 2 (two) years. During this period, you can contact us in case of any dispute, damage or malfunction that is not caused by usage error;

VENUS WATER TREATMENT SYSTEMS

ADDRESS: Baylar Mahallesi 72234 Sokak No:1/8
Cumra / KONYA

12	11th	10	9	8	7	6	5	4	3	2	one

No. Char

Date

1

2

3

4

5

5

5

5

5

5

5

5

5

5

5

REFUSED

REFUSED

REFUSED

Please Summarize



WARRANTY CERTIFICATE

the use of this document; Permission has been granted by the Consumer Protection and Market Surveillance Directorate of the TR Ministry of Customs and Trade, pursuant to the Law on Consumer Protection No.

MANUFACTURER AND IMPORTER

TITLE : VENUS WATER TREATMENT

PHONE / EMAIL :

AUTHORITY'S SIGNATURE / FRAME

THE SELLER

TITLE

PHONE / FAX / EMAIL

INVOICE DATE / NUMBER

DELIVERY DATE AND PLACE

AUTHORITY'S SIGNATURE / FRAME

GOODS

TYPE : WATER PURIFIER

BRAND : VENUS

MODEL :

WARRANTY PERIOD : 2 YEARS

MAXIMUM REPAIR TIME : 20 WORKING DAYS

BANDROLE AND SERIAL NO

PRODUCT LIFE: THE LIFE LIFE OF THE WATER TREATMENT DEVICE IS 10 (TEN) YEARS. The product you purchased has a company warranty of 2 (two) years.

WARRANTY CONDITIONS

The warranty period starts from the delivery date of the goods and is 2 years. 12)

During the warranty period (2 years), damage and malfunctions caused by usage errors, low or excess voltage, faulty electrical installation, transportation after the delivery of the product to the customer, damage during transportation, malfunctions, malfunctions caused by the use of the product contrary to the issues in the user manual are included in the warranty. is not. The determination of the technical methods to be applied for troubleshooting or part replacement of our products and the determination of the parts to be replaced belong entirely to the authorized service. 3)

If the consumer chooses the right to free repair from these rights, the seller; It is obliged to make or have the goods repaired without any charge under any other name, such as labor cost, replacement part cost or any other name. The consumer can also use the right of free repair against the manufacturer or importer. The seller, the manufacturer and the importer are jointly responsible for the use of this right by the consumer.

4) If the consumer uses the right to free repair, the goods;

- If it fails again within the warranty period, • If the maximum period required for repair is exceeded, • If it

is determined by a report by the authorized service station, the seller, the manufacturer or the importer that it is not possible to repair. The consumer may request from the seller a refund of the price of the goods, a reduction in the amount of the defect or, if possible, the replacement of the goods with a non-defective one. The seller cannot refuse the consumer's request. If this request is not fulfilled, the seller, the manufacturer and the importer are jointly and severally liable. 5)

The repair period of the goods cannot exceed 20 working days. This period starts from the date of notification of the defect related to the goods to the authorized service station or the seller within the warranty period, and from the date of delivery of the goods to the authorized service station outside the warranty period. If the defect of the goods cannot be fixed within 10 working days, the manufacturer or the importer; Until the repair of the good is completed, it has to allocate another good with similar characteristics to the use of the consumer. In the event that the product fails within the warranty period, the time spent in the repair is added to the warranty period. 6)

Defects caused by the use of the product contrary to the terms in the user manual are out of the scope of warranty. 7)

The consumer may apply to the Consumer Arbitration Committee or the Consumer Court in the place of residence or where the consumer transaction is made, in case of disputes that may arise regarding the use of his rights arising from the warranty.

Ministry of Customs and Trade, General Directorate of Consumer Protection and Market Surveillance.

9) Devices that do not use pressure reducers are not covered by the warranty.

OPTIONAL RIGHTS PROVIDED TO THE CONSUMER IN ARTICLE 11 OF THE LAW 1)

In case the goods are found to be defective, the consumer; a)

Returning from the contract by declaring that he is ready to return the sold item, b)

Demanding a discount on the sale price at the defect rate by retaining the sold item,

c) Requesting that the sold item be repaired free of charge, at the seller's expense, if it does not require excessive costs. c) If possible, a faultless copy of the sold item. may use one of the optional rights to request a replacement with The seller is obliged to fulfill this demand preferred by the consumer.

(2) Among these rights, the consumer's right to free repair or to replace the product with a non-defective one can also be exercised against the manufacturer or importer. The seller, the manufacturer and the importer are jointly and severally liable for the fulfillment of the rights in this paragraph.

(3) In the event that the consumer uses his right to free repair, a)

Failure within the warranty period, b) Exceeding the maximum time

required for repair, c) Authorized service station, dealer,

manufacturer, where repair is not possible.

or in the event that it is determined by the importer with a report, the

Consumer may request from the seller to return the price of the goods, to reduce the price at

the rate of the defect, or to replace the goods with a non-defective one, if possible. In such

cases, the seller cannot refuse the consumer's request. If this request is not fulfilled, the seller, the manufacturer and the importer are jointly and severally liable.

APPLICATIONS OF CONSUMERS REGARDING COMPLAINTS AND OBJECTIONS

• In case the Warranty Certificate is not given by the Seller, the Consumer may apply to the Ministry of Customs and Trade, General Directorate of Consumer Protection and Market Surveillance. • The Consumer may apply to the Consumer Arbitration Committee or the

Consumer Court in the Place of Residence or the Place where the Consumer Transaction is Made, in Disputes that may arise regarding the Use of Rights Arising from the Warranty.